

ACCESSORIES

Polymerisation lamp M.M.866

The blue light polymerisation device enables you to speed up the polymerisation process of the 601.2 resin. (20 minutes)

Designation	Characteristics	Ref.
Blue light mounting device	Solar energy collector for light-curing resins. Equipped with a timer (3 positions): 5 min. 10 min. and continual.	08 00866 10



ISOFORCE

NEW

The ISOFORCE device allows flattening of embedded samples in a central pressure sample holder. Homogeneous pressure is applied to each sample via a pneumatic cylinder. The operation is carried out in complete safety thanks to the dual control system.

Designation	Characteristics	Ref.
ISOFORCE	Ø 210 mm	60 MLISI 210
	Ø 160 mm	60 MLISI 160



Moulds with removal bottom

Mainly used with the transparent mounting resins (601.2, 609, 603 & 603.2).

Type	Qty.	Dim. (mm)	Ref.
681	5	25	06 00681 10
	5	30	06 00681 20
	5	32	06 00681 30
	5	40	06 00681 40



Flexible rectangular cold mounting moulds

Specifically, for cold mounting resin, adapted to complex and nonstandard shapes, many dimensions available, made of a flexible material to facilitate mould removal (Not recommended for EPOXY resins).

Type	Qty.	Dim. (mm)	Ref.
Flexible 670	5	70 x 30 x 40	06 00670 10
	5	100 x 42 x 30	06 00670 20
	5	120 x 50 x 30	06 00670 30
	5	100 x 70 x 30	06 00670 40
Flexible 670 4 pieces set	1	70 x 30 x 40	06 00670 00
	1	100 x 42 x 30	
	1	120 x 50 x 30	
	1	100 x 70 x 30	

Any other dimensions on request.





Flexible cylindrical cold mounting moulds

Available in all standard diameters for central and individual pressure sample holders, made of a flexible material to facilitate mould removal. (For an intensive use of the EPOXY 603 resin, it is preferable to use moulds with removable bottoms).

Type	Qty.	Dim. (mm)	Ref.
Flexible 625	5	Ø 25	06 00625 00
Flexible 630	5	Ø 30	06 00630 00
Flexible 632	5	Ø 32	06 00632 00
Flexible 640	5	Ø 40	06 00640 00
Flexible 650	5	Ø 50	06 00650 00
Flexible 660	5	Ø 60	06 00660 00



Universal sample-holder mould Series 610

The LAM PLAN universal sample-holder is a smart and economical system which combines the functions of both mould and sample-holder for cold mounting processes using any kind of cold liquid resin.

See details page **ACCESSORIES FOR POLISHING MACHINES.**



Cups and spatulas

Paper cups and wooden spatulas to mix cold mounting resins.

Characteristics	Qty.	Capacity	Ref.
Paper cups	200	200 ml	06 00696 00
Set: cups and spatulas	400 cups 400 spatulas		06 00698 00

Micro engraver

To mark and identify samples.

M.M.886

Characteristics	Ref.
Speed 0-20 000 rpm Clamping jaw: Ø 1,58 mm - Ø 2,35 mm - Ø 3,175 mm	10 88630 00



ACCESSORIES

Charge element for resin

The Voluma spheres are ceramic balls used as sole or base. They allow increasing the hardness of the mounting resins and decrease their shrinkage in order to reduce fallen edge effects. They are adapted to all types of hot and cold mounting resins; available in various colours to personalize samples..

VOLUMA SPHERES

Characteristics	Qty.	Ref.
3-colour set	3 bottles of 250 cc	06 0075V 00
Blue	250 cc	06 0075V 20
Ivory	250 cc	06 0075V 30
Red	250 cc	06 0075V 10



Dye

EPOCHROME POWDER

NEW

Fluorescent contrast dye to be mixed with clear mounting resins, highlights porosity and micro-cracks. Requires the use of filters on the microscope for optimal results. The wavelength at maximum absorbance is 438-440 nm.

Mainly used with LAM PLAN 603 and 603.2 epoxy resins.

Characteristics	Qty.	Ref.
EPOCHROME powder dye	20 g pot	06 0EPCH 00



Unmoulding agent

SOLILUB

Recommended for PHENOFREE, 633 and 634 resins.

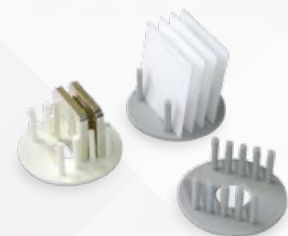
Characteristics	Qty.	Ref.
Anti-stick powder for hot mounting process	50 g pot	06 00683 00



Blade-holders

For the vertical positioning of thin sections, to use of could mounting resin.

Type	Qty.	Thickness in mm	Ref.
Blade-holder series 690	100	1	06 00690 10
Blade-holder series 691	100	2	06 00690 20
Blade-holder series 692	100	3	06 00690 30



Holding clips

Characteristics	Qty.	Ref.
-----------------	------	------

CLIPS TYPE 3

Holding plastic, raised clips to use with cold mounting resin.	100	06 00694 00
--	-----	-------------

CLIPS TYPE 5

Holding clips type 5 metal clips to use with hot mounting resin.	100	06 00693 00
--	-----	-------------

