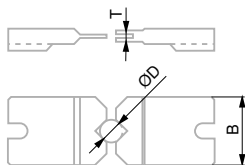
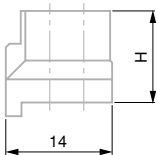
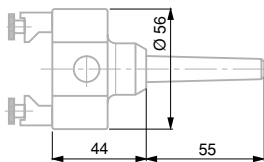
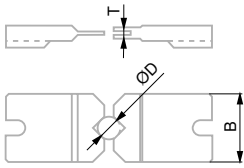


Morse 2  
SCAN 52 / F60



<p><b>902.6260</b></p>	<p>Adaptador para cono Morse 2</p>	
<p><b>902.6220</b></p>	<p>Sujetador de 2 mordazas Sujeción exterior para uso manual</p>	<p>• Require 902.6360</p>
<p><b>902.6231</b> H=22</p>	<p>Bloques elevadores para mordazas exteriores</p>	<p>• (también para Morse 1, con 902.6220)</p>
<p><b>902.6141</b> 0-6 mm T = 1.5</p> <p><b>902.6142</b> 0-6 mm T = 3</p> <p><b>902.6143</b> 6-12 mm T = 3</p>	<p>Mordazas exteriores, para</p>	<p>• para 902.6220</p>
<p><b>902.6144</b> 12-18 mm T = 6</p>		
<p><b>902.6145</b> 18-24 mm T = 9</p>		
<p><b>902.6152</b> 0-6 mm T = 6</p>		
<p><b>902.6153</b> 0-6 mm T = 15</p>		
<p><b>902.6140</b> 6-12 mm T = 15</p>		

J

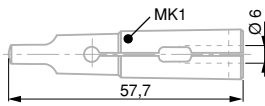


**902.6154**

Set with:  
902.6141  
902.6142  
902.6143  
902.6144  
902.6145

Mordazas Externas en pares

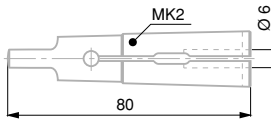
902.6141 : Mordazas dia 0-6mm, T1=1.5mm  
902.6142 : Mordazas dia 0-6mm, T1=1.3mm  
902.6143 : Mordazas dia 6-12mm, T1=3mm  
902.6144 : Mordazas dia 12-18mm, T1=6mm  
902.6145 : Mordazas dia 18-24mm, T1=9mm



**902.6250**

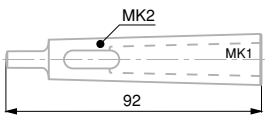
Adaptador de Centro con un agujero de acople de 6 mm dia

*Solo para Morse 1*



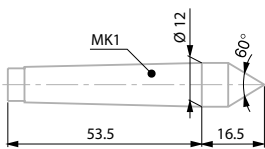
**902.6251**

Adaptador de centro con agujero de acople de 6 mm dia.



**902.6360**

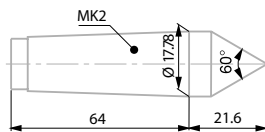
Buje de reducción Morse 2 a 1



**902.6000**

Centro macho extra, 10 mm (2 items suministrados con SYLVAC-SCAN 25)

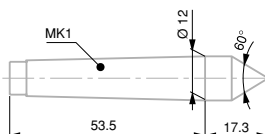
*Solo para Morse 1*



**902.6202**

Centro macho extra, 17 mm (2 items suministrados con SYLVAC SCAN F60 y SYLVAC SCAN 52 Reflex click)

Standard

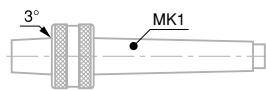


**902.6203**

Centro guía (diamantado 10 mm)

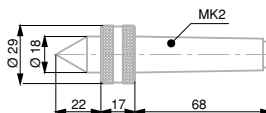
*Solo para Morse 1*

Morse 2  
SCAN 52 / F60



**902.6160**

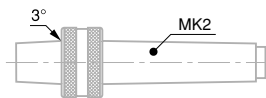
Centro giratorio con un macho cónico B12  
mas un vástago de cono Morse 1  
( 902.6206/902.6207)



**902.6161**

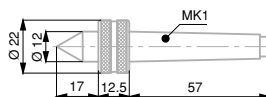
Centro giratorio, Morse 2  
(1 item suministrado con SYLVAC SCAN F60  
y SYLVAC SCAN 52 Reflex click)

Standard



**902.6162**

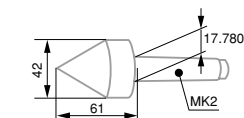
Centro giratorio con un  
cono macho B18  
Morse 1



**902.6163**

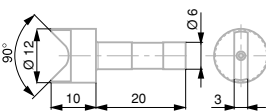
Centro giratorio Morse 1

*Solo para Morse 1*



**902.6380**

Centro giratorio Morse 2

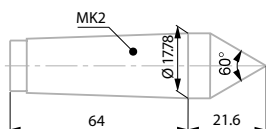


**902.6204**

Centro hembra,  
10 mm dia.

Require  
902.6251

*(también para Morse 1, con 902.6250)*

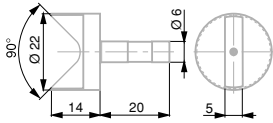


**902.6212**

Centro macho extra, 17 mm, diamantado  
(1 item suministrado con SYLVAC SCAN F60  
y SYLVAC SCAN 52 Reflex click)

Standard

Morse 2  
SCAN 52 / F60

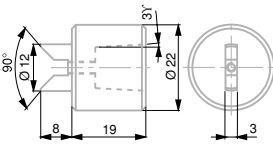


**902.6205**

Centro hembra  
20 mm dia.

•  
Require  
902.6251

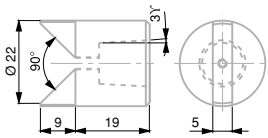
(también para Morse 1, con 902.6250)



**902.6206**

Centro hembra  
10 mm dia.  
También con  
cono interior B12

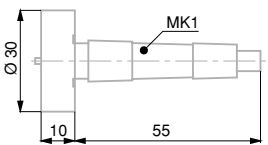
Solo para Morse 1  
(require 902.6160)



**902.6207**

Centro hembra  
12 mm dia.  
También con  
cono interior B12

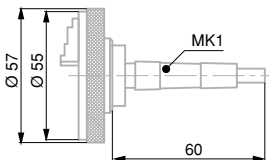
Solo para Morse 1  
(require 902.6160)



**902.6208**

Placa  
30 mm dia.

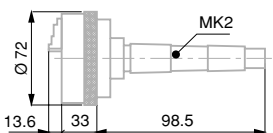
Solo para Morse 1



**902.6300**

Sujeción de 3 mordaza, rango 1÷15  
mm (Capacidad: exterior 1÷15 mm  
interior 11÷26 mm)

•  
Require  
902.6360

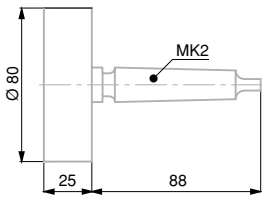


**902.6301**

Sujeción de 3 mordazas  
vástago cónico (Capacidad de  
fijación: exterior 2÷50 mm interior  
23÷50 mm)

•

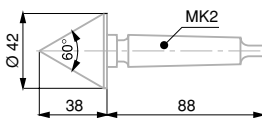
Morse 2  
SCAN 52 / F60



**902.6209**

Placa,  
80 mm dia. con vástago  
cono Morse 2

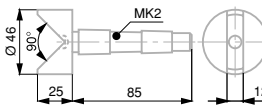
•



**902.6210**

Centro de guía, Ø 40 mm.  
con vástago cono Morse 2  
Diamantado

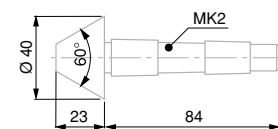
•



**902.6340**

Centro macho, 15-40 mm dia.  
con vástago cono Morse 2

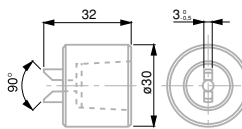
•



**902.6341**

Centro macho, 15-40 mm dia.  
con vástago cono Morse 2

•



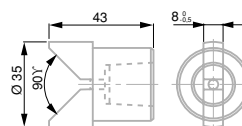
Requires  
902.6360

**902.6310**

Centro hembra, 10 mm dia.,  
con cono interno B18

•  
Require  
902.6162

(for old Sylvac SCAN 25)

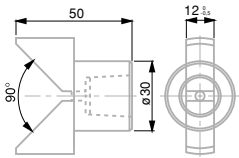


**902.6311**

Centro hembra, 30 mm dia.,  
con cono interno B18

•  
Require  
902.6162

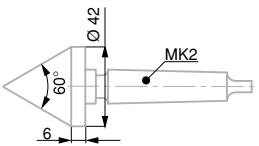
Morse 2  
SCAN 52 / F60



**902.6312**

Centro hembra, 45 mm dia.,  
con cono interior B12

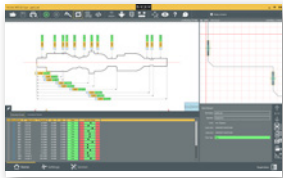
•  
Require  
902.6162



**902.6410**

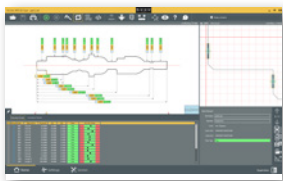
Centro de mando 42 mm dia max (diamantado)

•



**902.7015**

Reflex SCAN+ Offline Software



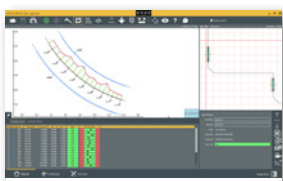
**902.7016**

Reflex SCAN+ Script programming  
(Opción, requiere Reflex SCAN+)



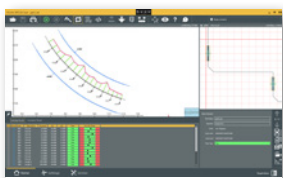
**902.7017**

Reflex-SCAN+ Automation software module  
(Opción, requiere Reflex SCAN+)



**902.7018**









Reflex-SCAN+ CAD compare software  
(Opción, requiere Reflex SCAN+)



**902.7020**

Reflex-SCAN+ Offline CAD compare software

## ACCESORIOS

			SCAN 52	SCAN F60
	<b>902.6012</b>	Pieza de demostración dorado	•	•
	<b>902.6013</b>	Pieza de demostración dorado para medición de roscas	•	•
	<b>902.6600</b>	Mesa para Sylvac SCAN F60 (85 x 85 x 70 cm)		•
	<b>902.6601</b>	Mueble para Sylvac SCAN F60 con espacio de almacenamiento para ordenador, cajón con cerradura y brazo articulado para teclado y pantalla		•
	<b>902.6605</b>	Mesa de altura ajustable (71 a 1140 mm) para teclado, pantalla y ratón (80 x 60mm)		•
	<b>902.6607</b>	Cajón para SCAN F60 (combinado con 902.6601)		•
	<b>928.6006</b>	Maletín Plastiform para SCAN y VISIO	•	•
	<b>902.6609</b>	Estante	•	•

